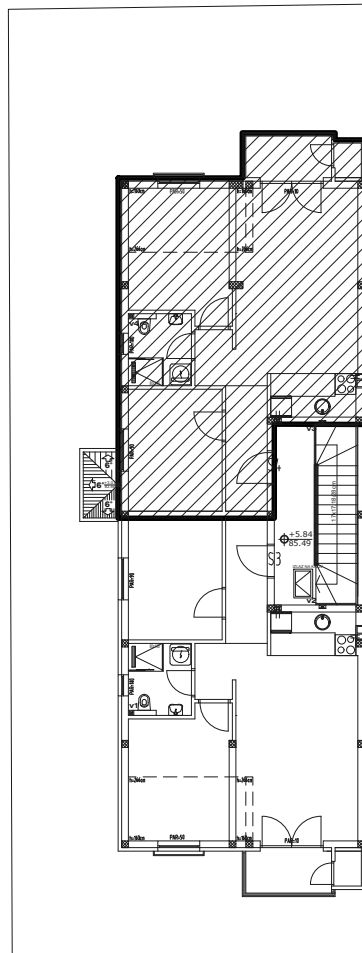
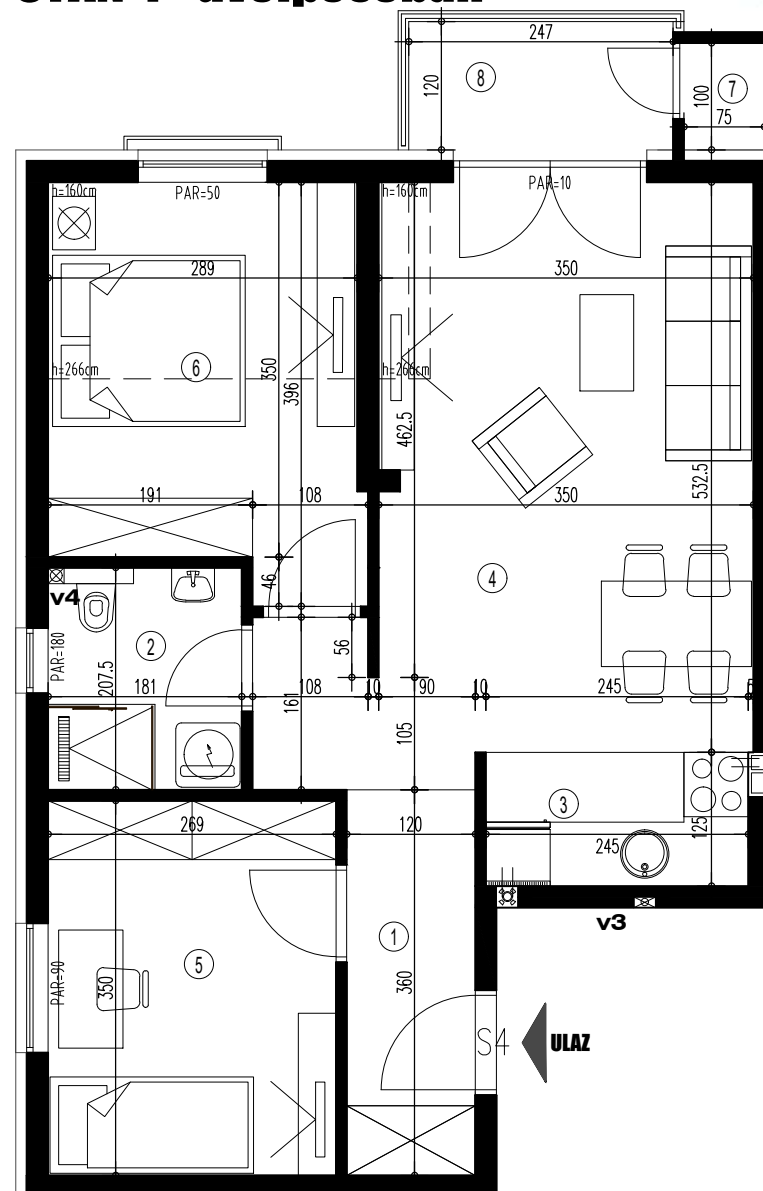


## SITUACIJA



Ulica Jovana Ristića

## STAN 4 - dvoiposoban



## POTKROVLJE

S4 - dvoiposoban

BR.	NAZIV PROSTORIJE	VRSTA PODA	POVRŠINA PODA	KOEF.	KORISNA POVRŠINA
1	Ulaz	parket	4.32 m <sup>2</sup>	1.00	4.32 m <sup>2</sup>
2	Kupatilo	ker. pločice	3.73 m <sup>2</sup>	1.00	3.73 m <sup>2</sup>
3	Kuhinja	ker. pločice	3.06 m <sup>2</sup>	1.00	3.06 m <sup>2</sup>
4	Dnevna soba	parket	21.01 m <sup>2</sup>	1.00	21.01 m <sup>2</sup>
5	Soba	parket	9.41 m <sup>2</sup>	1.00	9.41 m <sup>2</sup>
	Soba	parket	10.67 m <sup>2</sup>	1.00	10.67 m <sup>2</sup>
6	Ostava	ker. pločice	0.75 m <sup>2</sup>	1.00	0.75 m <sup>2</sup>
7	Terasa	ker. pločice	3.14 m <sup>2</sup>	1.00	3.14 m <sup>2</sup>
				UKUPNO:	56.09 m <sup>2</sup>
komercijalna površina				k-0,97:	54.41 m <sup>2</sup>

BROJ UGOVORA

kontakt tel.